

# COMPREHENSIVE CANCER INFRASTRUCTURES FOR EUROPE – CCI4EU

Overview of Achievements  
Simon Oberst, OECI for Co-ordination

Athens  
12<sup>th</sup> June 2025



## The Mission Board of the EU Mission on Cancer has defined Comprehensive Cancer Infrastructures

“

*as ‘national or regional infrastructures that  
provide resources and services to support,  
improve and integrate cancer care, research,  
training of care professionals and education for  
cancer patients, survivors and families/carers’*

”



Funded by  
the European Union

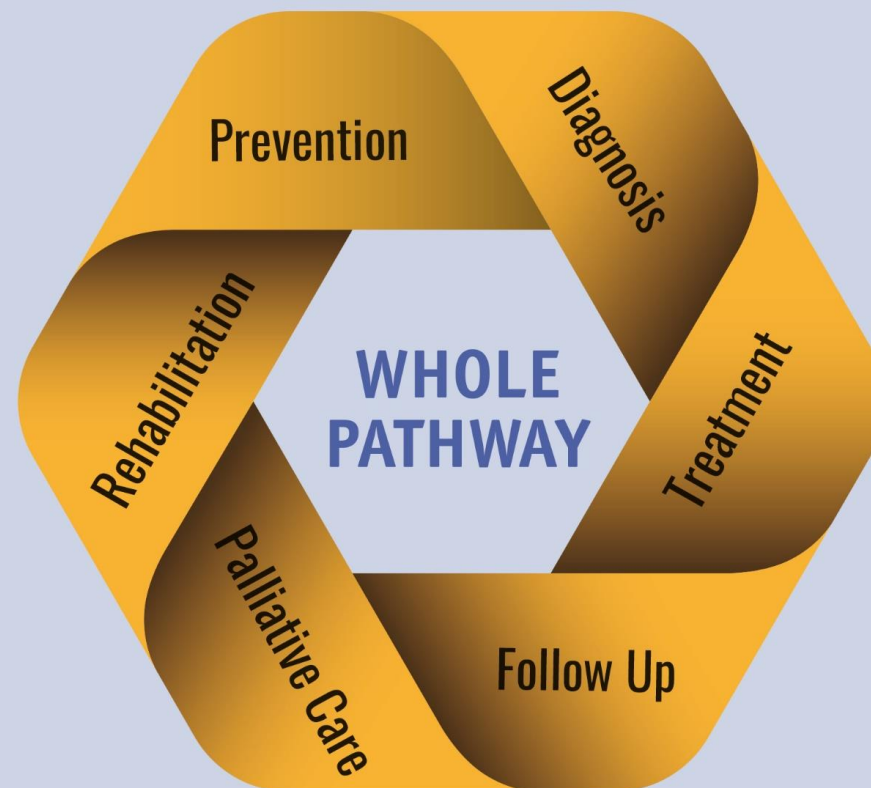
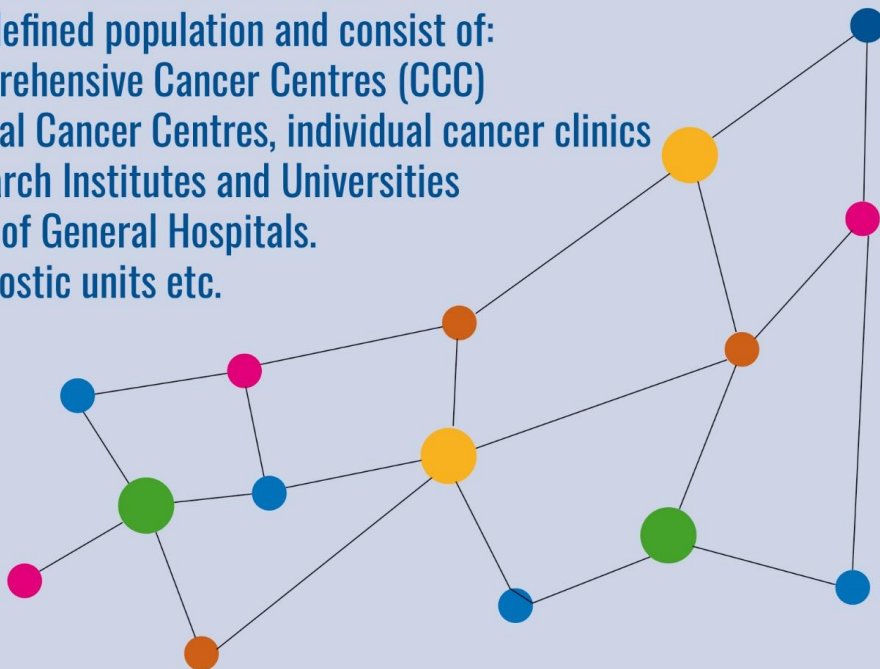
# What is a Comprehensive Cancer Infrastructure? (CCI)

**CCI** A Comprehensive Cancer Infrastructure should also include public functions such as public health, screening, primary and community care, and population cancer registries. Other supporting infrastructures such as –omics and clinical trials platforms

## CCN

Comprehensive Cancer Networks\* serve a defined population and consist of:

- Comprehensive Cancer Centres (CCC)
- Clinical Cancer Centres, individual cancer clinics
- Research Institutes and Universities
- Units of General Hospitals.
- Diagnostic units etc.



\* Including Comprehensive Cancer Care Networks according to GraNE WP 6 (CCCN)

# What is the difference between CCIs and Cancer Mission Hubs (ECHOS)?



- ECHOS defines Cancer Mission Hubs as: Organisations which foster dialogue and collaboration between diverse stakeholders; policymakers, healthcare professionals, researchers, business, patients and citizens...
- Hubs will connect policy initiatives of the EC and Member States
- CCIs are primarily networks of cancer care, research and education
- CCI4EU defined 'infrastructures' broadly to include functions such as screening, cancer registration and certain public health functions, and we defend that decision.
- In some CCIs in smaller Member States then Ministries of Health and Science are also involved.
- There are differences between the 2 concepts, whilst (especially in smaller Member States) there is quite an overlap in terms of personnel and function.
- CCI4EU has set up the EU Actions Forum to discuss together.

# What is capacity building (CB)?

## Dimensions of Capacity Building

### Individual

- Needs assessment
- Training
- Extending knowledge and competencies
- Processes for talent development and exchange

### Institutional

- Needs assessment
- Gap analysis and identifying barriers
- Sharing excellent practices
- Building resources (data) and teams
- Changing corporate mindsets

### Systemic

- Needs assessment
- Breaking down silos
- Bringing in outside expertise (twinning and teaming)
- Networking, governance and organisation
- Redesign of the system and sustainability

### WP2 in a nutshell:

Create Working  
Groups



Define Criteria & QI



Include them in a  
Maturity Model



# Using our Maturity Model in CCI4EU

## Themes:

1	Structure of the Comprehensive Cancer Infrastructure (CCI)
2	Comprehensive Cancer Centres (CCC)
3	Interfaces between research and care
4	Discovery and Translational Research
5	Clinical Research
6	Outcomes Research
7	Screening and Early Detection
8	Patient Pathway

## CCI4EU SURVEY

Self-assessment tool setting up and further developing Comprehensive Cancer Infrastructures (CCI)



		Level 1	Level 2	Level 3	Level 4
Theme 1: Structure of the CCI Network	Criterion 1 & Target State	Criterion description 1.1	Criterion description 1.2	Criterion description 1.3	Criterion description 1.4
	Criterion 2 & Target State	Criterion description 2.1	Criterion description 2.2	Criterion description 2.3	Criterion description 2.4
	Criterion 3 & Target State	Criterion description 3.1	Criterion description 3.2	Criterion description 3.3	Criterion description 3.4



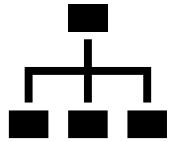
# The CCI Maturity Model as the Golden Thread



Assess the maturity  
of (potential) CCIs



Transparent overview of the  
maturity of CCI developments in  
the MS incl. scoring mechanisms



Structure the CCI criteria

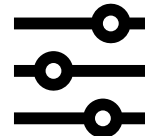
CCI Maturity  
Model



Quickly identify themes/criteria  
with potential for improvement



Overview of the effects of Capacity  
Building Interventions (= reaching a  
higher maturity level)



Define differentiated tailored  
interventions for Capacity Building



Data analysis and  
decision on Deep Dives  
for Capacity Building



**Profile each MS and a few  
Associated Countries  
in terms of CCI presence  
and levels of maturity**

The opening hypothesis is that  
presence and maturity of CCIs varies  
widely among MSs without satisfying  
a comprehensive definition

# Digital Survey

This digital survey had 3 core objectives:

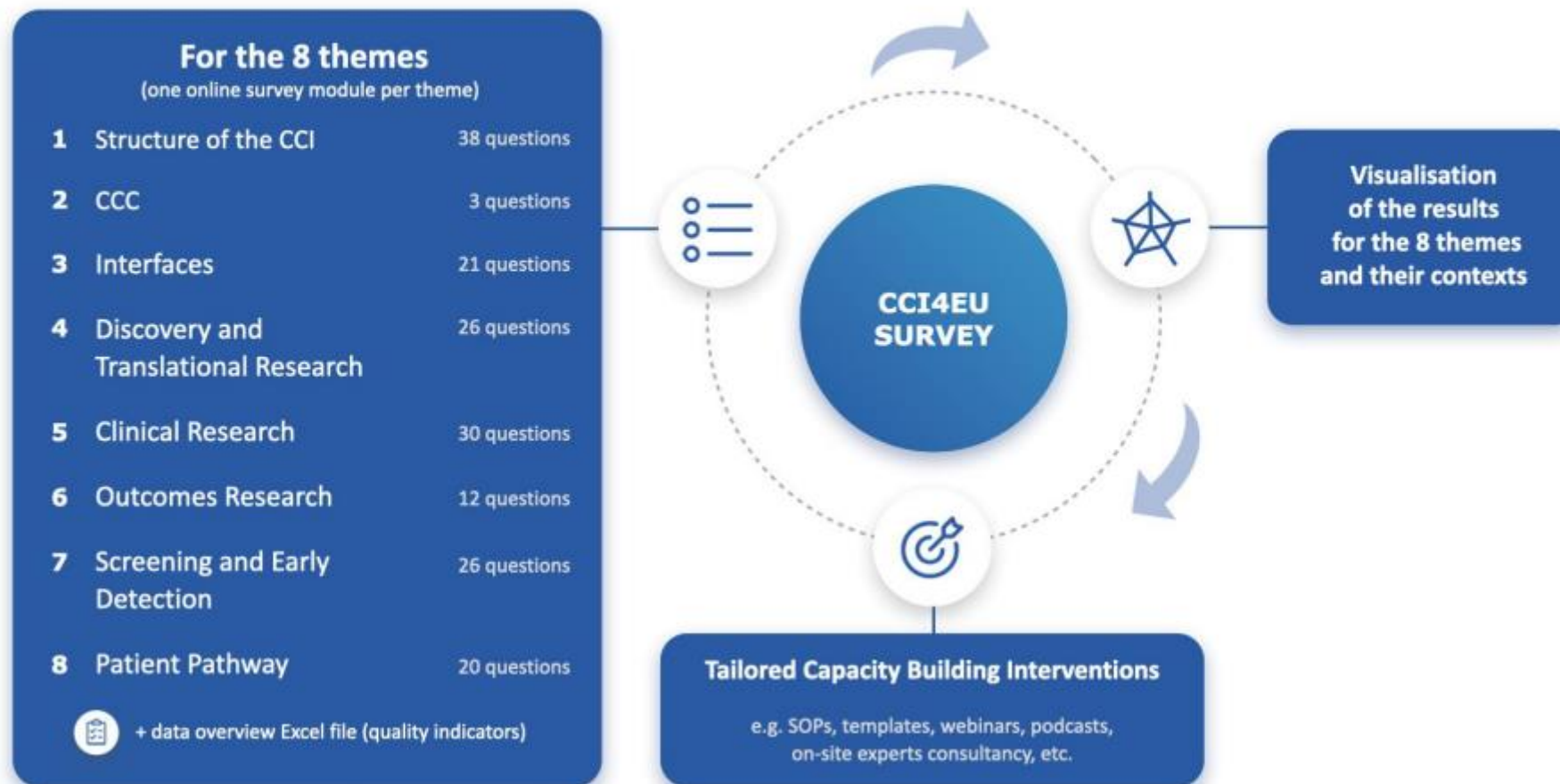
1. Map existing CCIs across Europe on integrating cancer research with care, education and training according to eight CCI4EU themes;
2. Measure the maturity of CCIs and identify candidates for CBIs to strengthen collaborations in research and care;
3. Understand the context in which the potential/actual CCI(s) are developing.

**Profile each MS and a few Associated Countries in terms of CCI presence and levels of maturity**

The opening hypothesis is that presence and maturity of CCIs varies widely among MSs without satisfying a comprehensive definition

## CCI4EU SURVEY

Self-assessment tool setting up and further developing Comprehensive Cancer Infrastructures (CCI)



**Deadline 31<sup>st</sup> May 2024** → to become eligible for CCI4EU Deep Dive.  
**The Survey remained open until 1 October 2024.**

Home

Dashboard

Maturity Model

Admin

BUBBLE CHART

BAR CHART

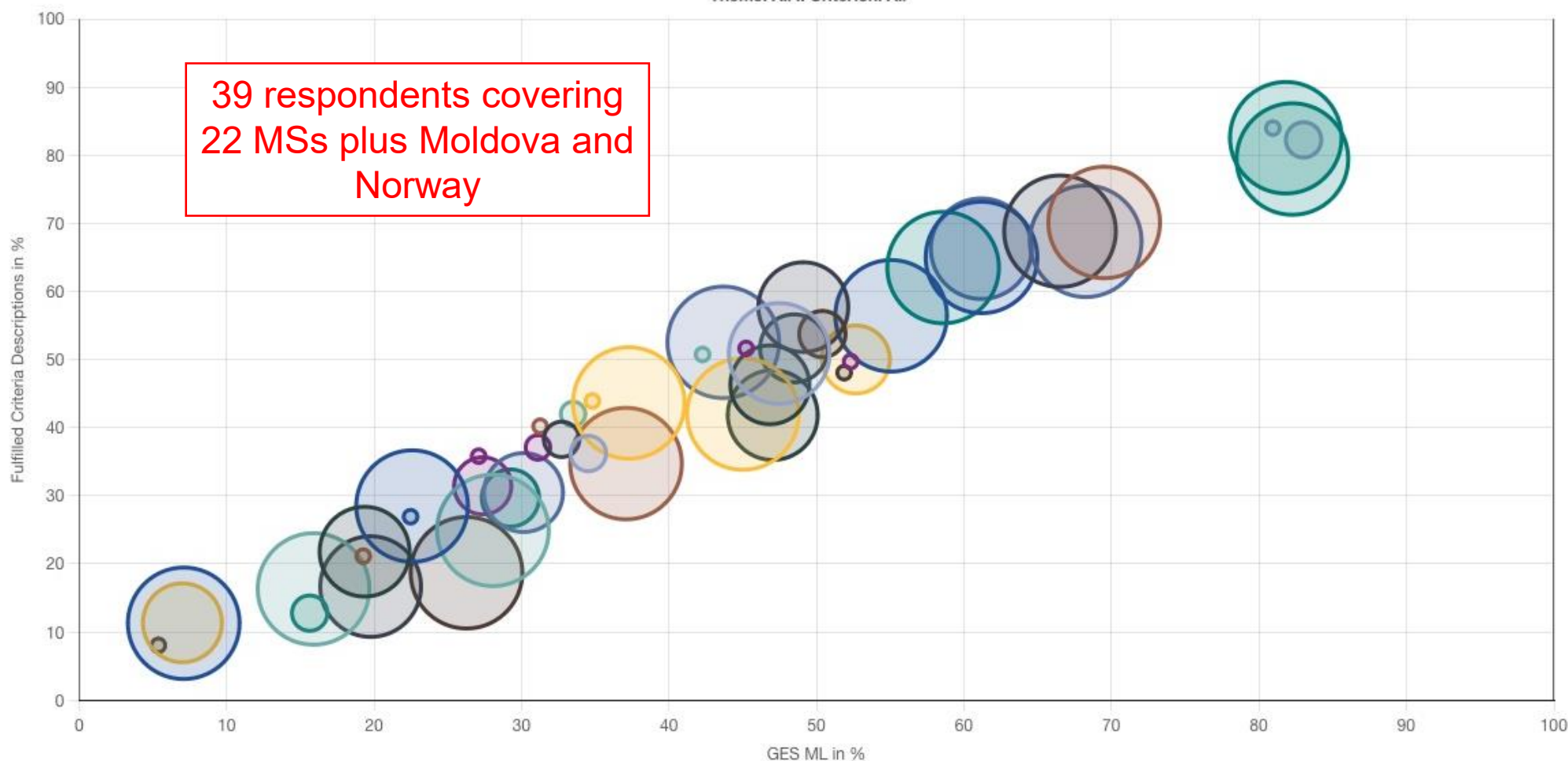
RADAR CHART

GEO CHART

CBI CHART

CBI DATA

Theme: All :: Criterion: All



hide all BG Bulgaria CY Cyprus CZ Czechia DE1 Germany, Lower Saxony DE2 Germany, Heidelberg DE3 Germany, Frankfurt-Marburg  
DE4 Germany, North Rhine-Westphalia DE5 Germany, Hamburg EE Estonia EL1 Greece, Athens EL2 Greece, Piraeus ES1 Spain, Basque Country  
ES10 Spain, Galicia ES1a\_part of ES1\_Spain\_Basque Country ES1b\_part of ES1\_Spain\_Basque Country ES1c\_part of ES1\_Spain\_Basque Country ES3a Spain, Valencia  
ES4 Spain, Cantabria ES5 Spain, Catalonia ES8 Spain, Madrid FI Finland FR1 France, Paris FR10 France, Siri Illiad FR4 France, En Hope Smart4CBT  
FR6b Institute Curie FR7 Unicancer FR8 Montpellier FR9 South Rock Paediatrics HR Croatia IE Ireland IT2 Italy, Veneto IT3 Italy, Lombardia  
IT7 Italy, Campania IT8 Italy, Piemonte and Valle d'Aosta LT Lithuania LU Luxembourg LV1b Latvia, Riga MD Moldova MD1\_Moldova



Home



Dashboard



Maturity Model



Admin

BUBBLE CHART

BAR CHART

RADAR CHART

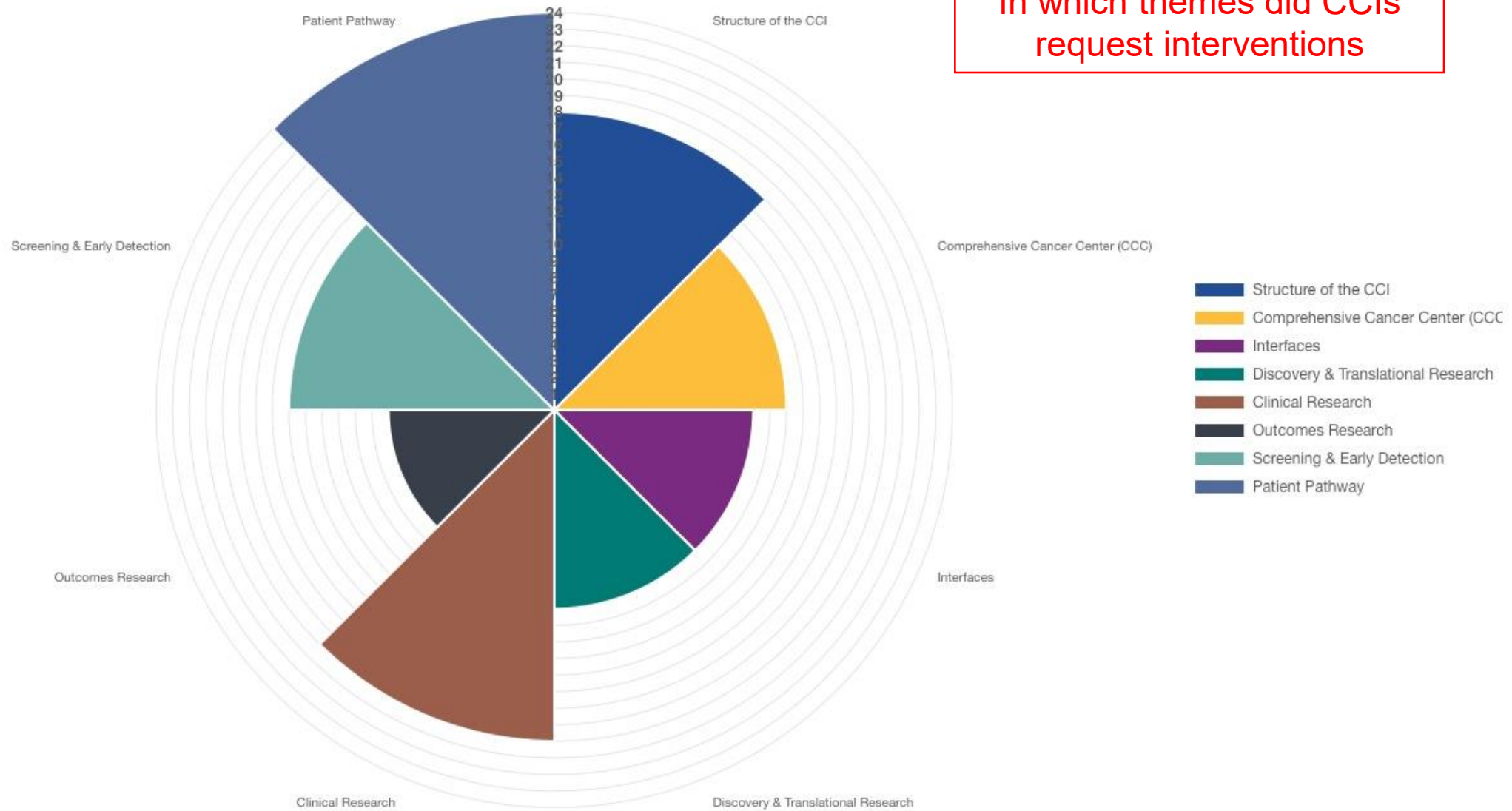
GEO CHART

CBI CHART

CBI DATA



Number of CCIs per Theme, that are interested in receiving Capacity Building Interventions







Home



Dashboard



Maturity Model



Overview

Themes

Structure of the CCI

Comprehensive Cancer Ce...

Interfaces

Discovery &amp; Translational ...

Clinical Research

Outcomes Research

Screening &amp; Early Detection

Patient Pathway



Admin

GES ML

50.00%

Established state-of-the-art research platforms are available and reachable for the whole research community.

Level 1

DT111



State-of-the-art research/technical platforms are planned and concrete initiatives are in the process of implementation.

DT112



Organisational support is planned and concrete initiatives are in the process of implementation.

Level 2

DT121



State-of-the-art research/technical platforms are available and in use in parts of the CCI.

DT122



Organisational support is available and in use in parts of the CCI.

Level 3

DT131



State-of-the-art research/technical platforms are available and in use in the whole CCI.

DT132



Organisational support is available and in use for the whole CCI.

DT133



Data on usage of platforms is collected systematically.

DT134



Biobanks cover most major tumour types.

Level 4

DT141



Quality assurance programs are in place.

DT142



There is an increase in the usage of platforms in a period of 5 years.

DT143



Biobanks are linked to clinical data.

DT144



There are written

Biobanks are established and accessible to the entire research community within the CCI.

75.00%

**Design tailored CBP interventions, giving priority to member states without any CCI**

This will be done according to the maturity of CCIs, the specific need analyses from the quality indicator results, and involve relevant stakeholders in each Member State

**Online Training Courses**

**Access to Resources Centre**

**DEEP DIVES**

**Regional Conferences**

**Preceptorships**

**One-off visits to an expert's site**



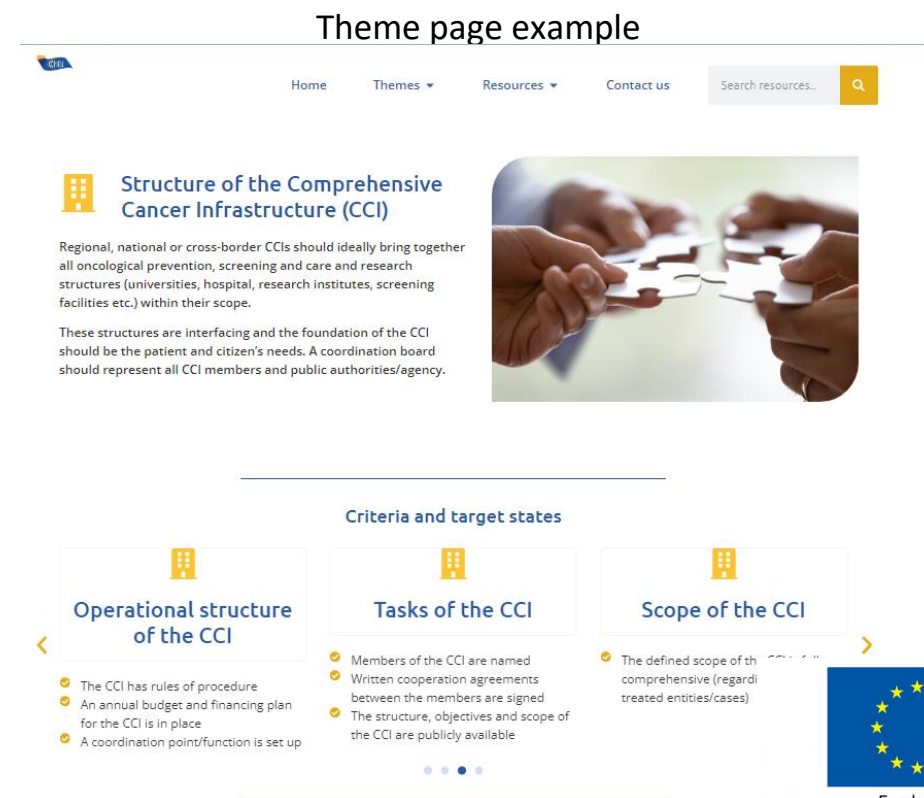
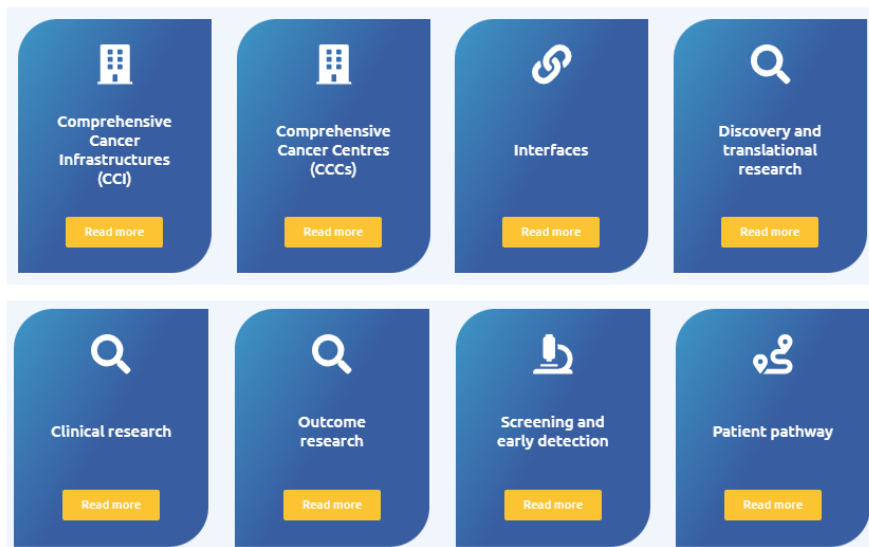
## T5.2 CCI's capacity building resources centre

Now over 200 validated resources

### - Timeline/next steps:

- Ongoing – coordination with WP4 who are currently gathering resources.
- May 2024 – V1 went live with “starter” home page and theme pages. Domain name <https://resources.cci4eu.eu/>
- June 2024 – Validate content “Theme” pages with key contacts
- End June 2024 – Presentation at General Assembly
- Sept 2024: Presentation at Capacity Building Conference

### Hor Capacity building themes





# Task 5.4 - Delivery of online training



## ONLINE COURSES

**WHAT DOES A COMPREHENSIVE CANCER INFRASTRUCTURE DO?**

CCI4EU online course

4 July 2024  
14.00 - 18.00 (CEST)  
Live online course

William Olszki, DE  
Course Co-Chair

Eva Jolly, SE  
Course Co-Chair

[www.e-ESD.net](https://www.e-ESD.net)

**CLINICAL TRIALS AND CLINICAL RESEARCH**

CCI4EU online course

15 October 2024  
15.30 - 16.30 (CEST)  
Live streaming

Pre-recorded materials available 1 month before

Ilona Luginova, PL  
Course Co-Chair

Josep Tabernero, ES  
Course Co-Chair

[www.e-ESD.net](https://www.e-ESD.net)

**MOLECULAR DIAGNOSTICS AND PRECISION MEDICINE**

CCI4EU online course

4 December 2024  
12.00 - 17.30 (CET)  
Live online course

Olle Cargnini, SE  
Course Co-Chair

Bui Henrique, SE  
Course Co-Chair

Anna Rappin, SE  
Course Co-Chair

[www.e-ESD.net](https://www.e-ESD.net)

**COST OF HEALTH CARE AND DRUGS**

CCI4EU online course

28 February 2025  
13.00 - 17.00 (CET)  
Live online course

Pre-recorded materials available from 3 February

Mark Leaver, SE  
Course Co-Chair

Wim van Harten, SE  
Course Co-Chair

[www.e-ESD.net](https://www.e-ESD.net)

**PATIENT EMPOWERMENT AND PATIENT-CENTRED CARE**

CCI4EU online course

19 March 2025  
13.00 - 17.30 (CET)  
Live streaming

Alexandre Bruto, SE  
Course Co-Chair

Daria Niczorek, SE  
Course Co-Chair

[www.e-ESD.net](https://www.e-ESD.net)

**DATA SHARING AND EXCHANGE**

CCI4EU online course

15 April 2025  
13.00 - 17.30 (CEST)  
Live streaming

André Delbecq, SE  
Course Co-Chair

Rodrigo Fernández, SE  
Course Co-Chair

[www.e-ESD.net](https://www.e-ESD.net)

**EARLY CANCER DETECTION, SCREENING, AND PREVENTION**

CCI4EU online course

4 June 2025  
12.30 - 16.40 (CEST)  
Live streaming

Ugo Pastorini, SE  
Course Co-Chair

Josephine Simon, SE  
Course Co-Chair

[www.e-ESD.net](https://www.e-ESD.net)

**PATIENT CENTERED CANCER OUTCOME RESEARCH**

CCI4EU online course

16 September 2025  
13.00 - 15.10 CEST  
Live streaming

Pre-recorded materials online and available by 20 July 2025

Christa Brunelli, SE  
Course Co-Chair

Christa Gaten, SE  
Course Co-Chair

[www.e-ESD.net](https://www.e-ESD.net)

**DEVELOPING RESEARCH SKILLS FOR YOUNG RESEARCHERS**

CCI4EU online course

25 September 2025  
12.30 - 14.30 CEST  
Live streaming

Pre-recorded materials online and available by 31 July 2025

Matteo Lombardi, SE  
Course Co-Chair

Marco Tagliamonte, SE  
Course Co-Chair

[www.e-ESD.net](https://www.e-ESD.net)

Call for Cases with a deadline of 6 July 2025

Past courses are available on the platform for continued use

Future courses

## Task 5.4 - Delivery of online training




All the courses remain available after the live streaming as on-demand material


### CCI4EU - Cost of health care and drugs

Description

Programme

Faculty List





The European School of Oncology is a proud partner in the Comprehensive Cancer Infrastructure for the European Union project.

03 February 2025 📅

28 February 2025 📅

✓

Register for the course

📄

Faculty Conflicts of Interest

# Task 5.4 - Delivery of online training – Update 18/04/2025

## Online courses - all available in an on-demand format



- Live Online Course on 04/07/24
- 170 participants attended the Live course
- 457 registered participants
- 134 participants completed the course
- 101 participants in progress



- Online course divided into 2 parts:
  - Pre-recorded lectures released on 03/02/25
  - Live Online Course – 28/02/25
- 40 participants attended the Live course
- 143 registered participants
- 27 participants completed the course
- 41 participants in progress

- Online course divided into 2 parts:
  - Pre-recorded lectures released on 16/09/24
  - Live Online Course – 15/10/25
- 85 participants attended the Live course
- 581 registered participants
- 86 participants completed the course
- 148 participants in progress



- Live Online Course on 19/03/25
- 24 participants attended the Live course
- 106 registered participants
- 24 participants completed the course
- 20 participants in progress



- Live Online Course on 04/12/24
- 170 participants attended the Live course
- 507 registered participants
- 95 participants completed the course
- 131 participants in progress

- Live Online Course on 15/04/25
- 25 participants attended the Live course
- 73 registered participants
- 2 participants completed the course
- 23 participants in progress





**Implement onsite interventions**

- (a) Deep Dives in up to 9 CCIs in MSs with targeted interventions involving teams of experts consulting
- (b) 3 Capacity Building Conferences oriented towards widening participating countries to implement CB among teams from CCIs

# Deep Dives

- A Deep Dive is a tailored and structured intervention within a Comprehensive Cancer Infrastructure (CCI).
- The purpose is to help the CCI build their capacity in particular domains by providing expert consultancy advice
- It consists of 3 site visits to the CCI by multidisciplinary expert teams, according to the specific domains of intervention chosen for that Deep Dive site.

A Deep Dive is composed of **3 site visits**:

1. **Detailed diagnosis** → Situational analysis
2. **Intervention** → Design of the step change improvement
3. **Follow-up** → Site to report back and gain further focused advice

# Spread of expertises of 95 recruited experts

Possibly the largest ever mobilisation of oncology experts to provide consultancy expertise – 22 days each – about €350,000 investment in each Deep Dive

Domain	Number of experts
Clinical Trials	29
Specifically, Early Phase trials	12
Translational research	32
Outcomes and Implementation Research	24
Data science and IT	16
Innovation processes and technology transfer	16
Education and Training (research)	24
Education and Training (clinical)	30
Medical Oncology	19
Radiation Oncology	11
Surgical Oncology	4
Pathology including molecular pathology	4
Radiology including nuclear medicine	5
Precision cancer medicine	18
Haemato-Oncology	7
Paediatric Oncology	2
Governance and management	29
Quality management	17
Cancer screening	14
Public health and primary prevention	8
Primary Care Physician	0
Population Cancer Registries	9
Technical patient pathway design	8
Patient involvement and empowerment	23
Oncology Nursing	10
Survivorship and rehabilitation	7
Patient pathway coordination	14
Palliative and supportive care	11
Psycho-oncology	12
Benchmarking	7
Health Economics	7
National Cancer Strategies	21
Consultancy and/or mentoring in change management	16



### A Project Management Basis

- Each chosen Deep Dive site has been given a **CCI4EU Project Manager (2.3 Person months are estimated for this task over 25 months)**
- Each team is led by **an expert chair** who is a senior oncologist, researcher, or cancer centre director.
- 95 Experts have been recruited for Deep Dives and other interventions
- Each chosen Deep Dive site is being granted a **6 person months local Project Manager**

# Requested CB interventions by 12 shortlisted CCI



Theme:	CCI ID:	EE1	HR1	SK1	ES1/6	RO1	CZ1a/b	IT8	FR4	PT1	IE1	BG1/2
Structure of CCI												
CCC												
Interfaces												
Discovery & translational research												
Clinical research												
Outcomes research												
Screening & early detection												
Patient pathways												

Nota Bene: the Horizon Europe action asks us to focus on Research and Innovation



- First visits of Deep Dives were delivered in November/December
- Expert teams are mobilised and have had several VC meetings
- CCIs have appointed local coordinators and project teams
- CCIs have signed MoUs with CCI4EU to ensure 'buy-in'
- Second site visits were delivered in March and April 2025
- Interim Reports were produced for each DD internally after both the 1<sup>st</sup> and 2<sup>nd</sup> visits.
- Some CCIs have formed their new infrastructure
- Many DDs are working on the documentation of Patient Pathways

## T6.3 – Delivery of 3 (regional) capacity building conferences



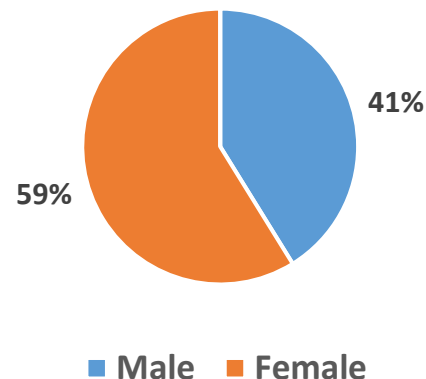
**1st conference: Warsaw, Poland - 10/11 October 2024**

**Bringing research insights into clinical implementation**

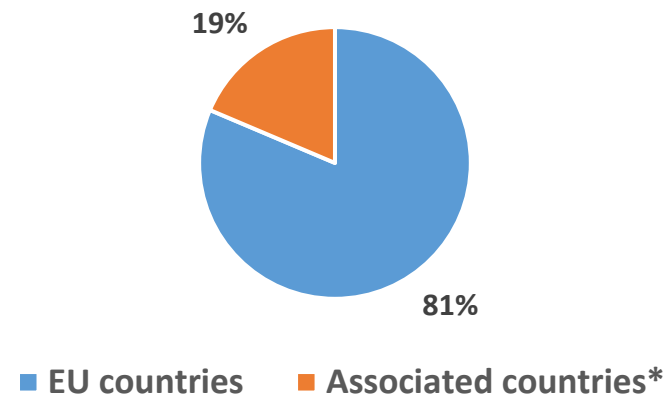
Chairs: Giovanni Apolone, Mef Nilbert, Simon Oberst, Iwona Lugowska

- 161 applications received
- 102 selected participants
- 4 participants cancelled
- 98 effective participants + 17 faculty members
- 80 evaluation questionnaires completed

**Gender**



**Geographical coverage**



\*Albania, Georgia, Moldova, Ukraine and

## T6.3 – Delivery of 3 (regional) capacity building conferences



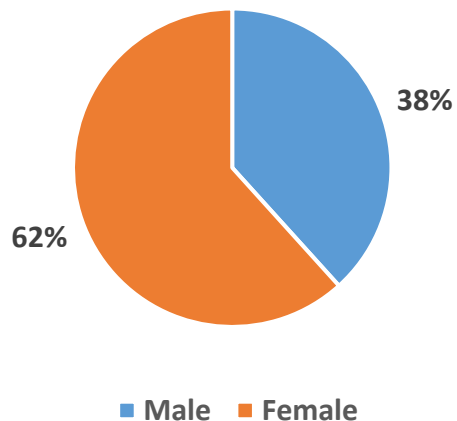
**2nd conference: Brussels, Belgium - 9/10 April 2025**

### **Accelerating cancer research and innovation in comprehensive cancer infrastructures**

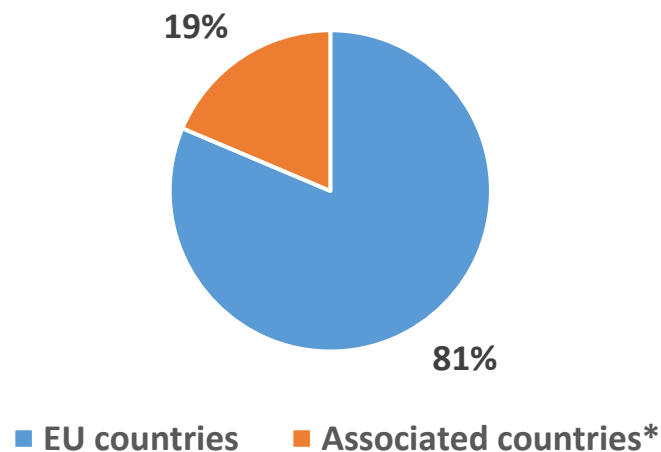
**Chairs: Maja Čemažar, Mef Nilbert, Johan Van Lint**

- 135 applications received
- 102 selected participants
- 8 participants cancelled
- 94 effective participants + 16 Confirmed faculty members
- 57 evaluation questionnaires completed

**Gender**



**Geographical coverage**



\*Albania,  
Georgia,  
Moldova,  
Ukraine, and

## T6.3 – Delivery of 3 (regional) capacity building conferences

Save the Date!

**EFFECTIVE PATIENT PATHWAYS**  
CCI4EU Third Capacity Building Conference

14-16 October 2025

Cancer Centre Clinica Universidad de Navarra, Madrid, Spain

Alexandre Brutti  
Chair

Claudia Valverde  
Chair

Yvonne Wengstöm  
Chair

[www.ESO.net](http://www.ESO.net)

! Attendance to the conference is by application only

Funded by the European Union  
Horizon Europe Grant Agreement n. 101102366

**3rd conference: Madrid, Spain - 15/16 October 2025**

### **Effective Patient Pathways**

Chairs: Claudia Valverde, Yvonne Wengstöm, Alexandre Brutti

**Applications deadline: 30 June 2025**



## WP 7 | Scale-up & sustainability & Final report



7.1 - Develop a method for evaluating the Capacity Building (CB) achievements (Global Efficacy Score)

7.2 - Digital outcome benchmarking and continuous learning processes

7.3 - Twinning and Teaming Proposals

7.4 - Other financing methods

7.5 - Overall report of the CB actions and recommendations for future CB projects

Task	Status	Update
7.1	<i>DONE</i>	Methodology for awarding the <b>Global Efficacy Score (GES)</b> developed
7.2	<i>ONGOING</i>	Advancement of analysis and collaboration with WP2 on updating the <b>digital benchmarking</b> tool
7.3	<i>ONGOING</i>	Activities started on Jan 2025 (UNICANCER & OECI)
7.4	<i>ONGOING</i>	Activities started on Jan 2025 (OECI)
7.5	-	To be started

# WP 8 ACHIEVEMENTS



1

## DELIVERABLE 8.1

The Communication and Dissemination Plan has been submitted on time

2

## MILESTONE 8.1

The CCI4EU website has been launched and is up and running

3

## C&D TOOLS

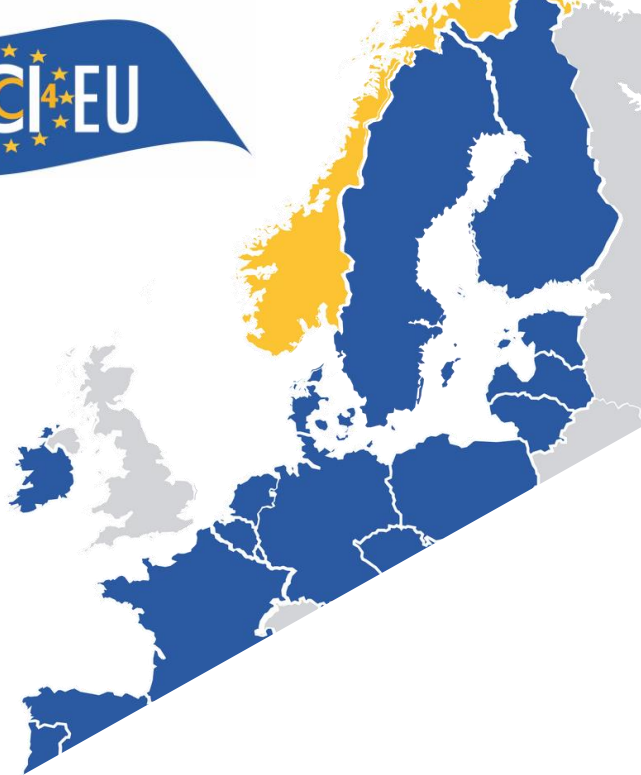
Social Media platforms, CCI4EU Newsletter, CCI4EU Visual Suite; CCI4EU Infographic; Support with C&D tools for the other WPs

4

## WP MEETINGS

WP 8 internal meetings; Collaborative Meetings with other Work Packages; Synergies with other EC Actions





## Up next

WP8 will continue launching activities geared towards amplifying the CSA outreach at European and local level



**Targeted C&D campaigns**  
to promote the CCI4EU CB Conferences, online courses, deep dives and other resources



**Design & Translations**  
of the CCI4EU Infographic, booklet and poster in all the languages of the CSA



**Video library**  
Build a video library to present the CSA and the activities developed by the CCI4EU WPs

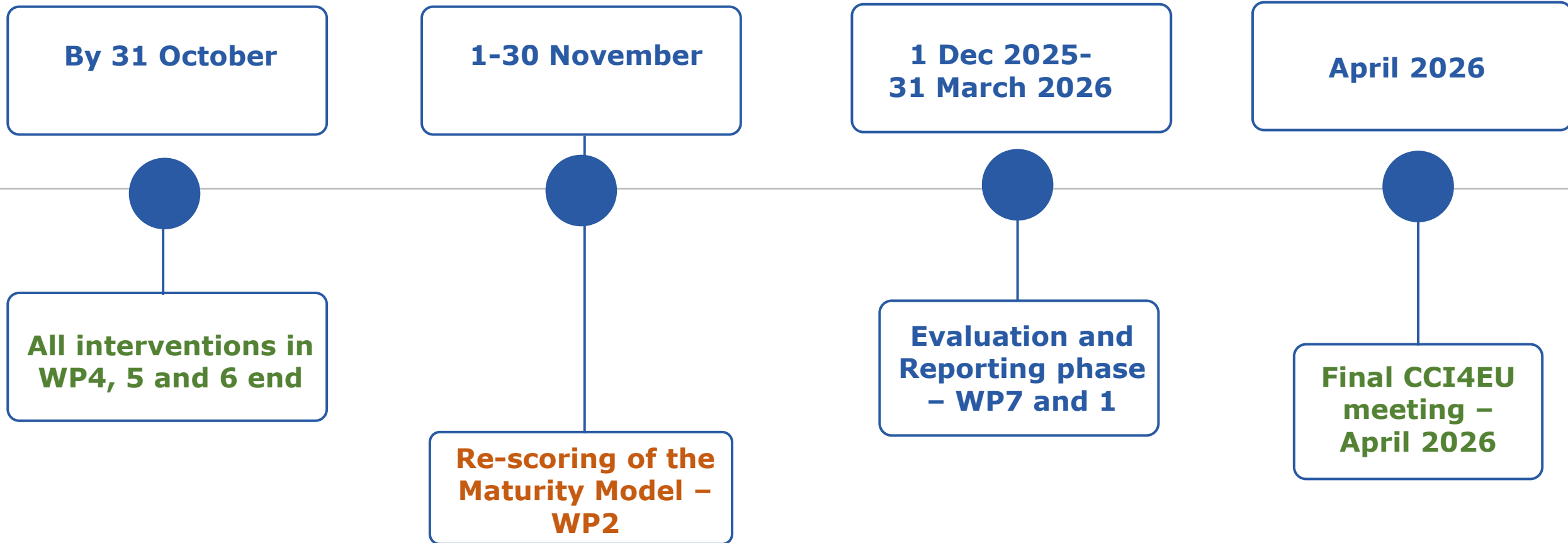


**Update the CCI4EU website**  
so as to include the latest news and resources developed within CCI4EU



1. We need to focus as much as we can on Research and Innovation
2. We need to be collaborate with other key Actions: EUNetCCC; ECHOS and JANE – mainly these because they involve structures.
  - they also involve detailed areas such as research capacities
3. We need to be flexible about structural ‘solutions’ because our mandate is about capacity building, not creating new structures or a network
4. We need to identify unused budgets for ‘observerships’ – travel grants

# Future steps – completing the Action



**Thank you for your attention**

**Questions ad discussion**